

PRODUCT BULLETIN

Osmonics LIQUI/JECTOR Steam Filters effectively remove liquid and solid contaminants from autoclave and steam sterilizer operations, eliminating such problems as wet packs and stained instruments, while prolonging instrument life and reducing autoclave maintenance. As steam passes through the coalescing element, the liquid repellent surface of the element causes the liquid contaminant (and solid contaminants entrained in the liquid phase) to coalesce on the element's outer surface and fall, as coalesced droplets, to the base of the system where it is removed by the steam trap. The LIQUI/JECTOR operates throughout periods of both maximum and minimum flow, ensuring clean steam and/or air on a continuous basis. Unlike mechanical filtration, where the media becomes saturated with the liquid, the LIQUI/JECTOR Steam Filter's unique surface coalescing process is continuously self-cleaning, greatly increasing element life. Plus with no moving parts, the LIQUI/JECTOR is virtually maintenance free, **requiring element change-out approximately once a year.**



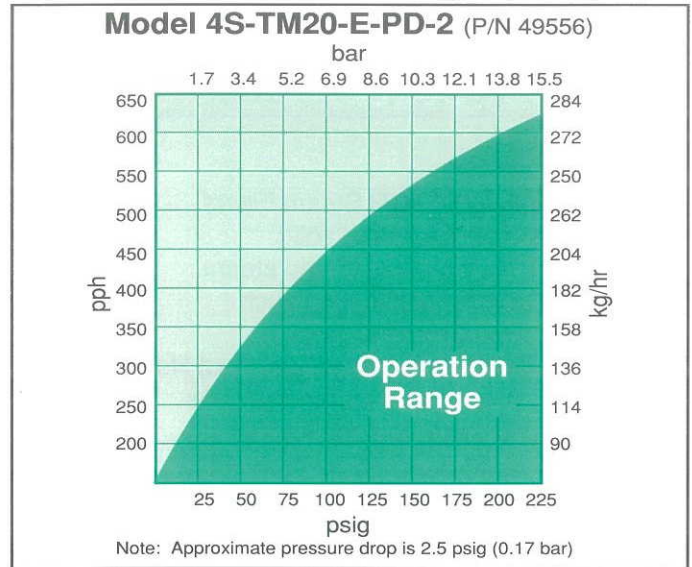
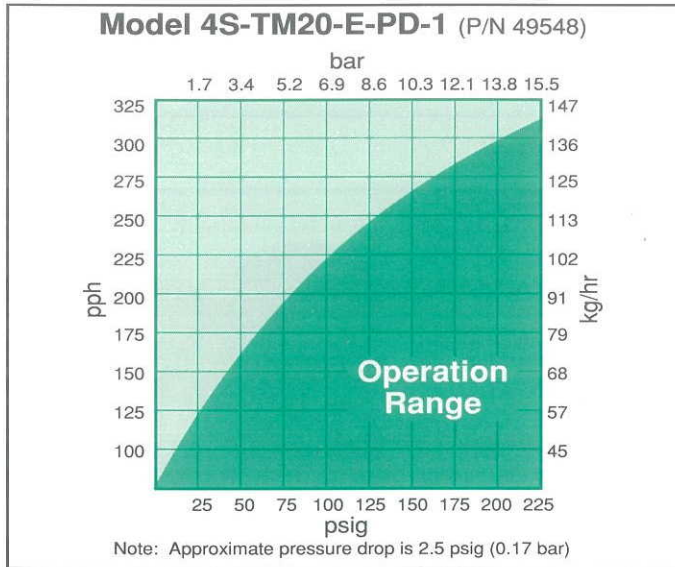
As steam passes through the coalescing element, the liquid repellent surface of the element causes the liquid contaminant (and solid contaminants entrained in the liquid phase) to coalesce on the element's outer surface and fall, as coalesced droplets, to the base of the system where it is removed by the steam trap. The LIQUI/JECTOR operates throughout periods of both maximum and minimum flow, ensuring clean steam and/or air on a continuous basis. Unlike mechanical filtration, where the media becomes saturated with the liquid, the LIQUI/JECTOR Steam Filter's unique surface coalescing process is continuously self-cleaning, greatly increasing element life. Plus with no moving parts, the LIQUI/JECTOR is virtually maintenance free, **requiring element change-out approximately once a year.**

FEATURES/BENEFITS

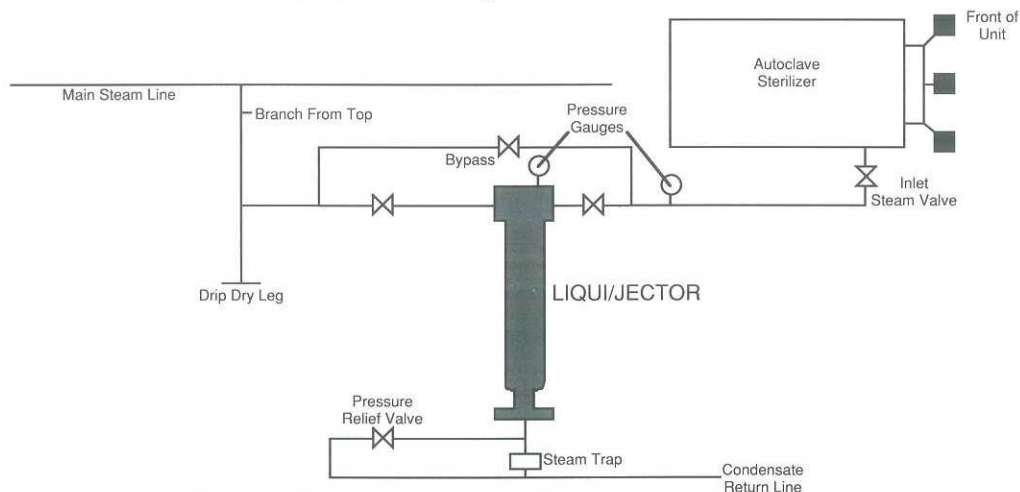
- **Durable stainless steel filter element and housing**
Coalescing element will not break down in steam service and will not plug automatic steam control valves on autoclaves.
- **Hydrophobic surface coating for surface coalescing**
Surface coalescing means long element life because free water and dirt do not enter depth of element. Water and dirt are flushed out the condensate drain.
- **Available in 10- and 20-inch standard cartridge filter lengths; other sizes on request.**
Purchase the unit that meets design requirement, saving on installation and operating costs.
- **Excellent chemical and thermal properties**
The LIQUI/JECTOR features a wide range of chemical compatibility, operating temperatures to 350°F (177°C) and operating pressure to 250 psig (17.2 bar).

SELECTING PROPER SIZE

Use the charts below to size your LIQUI/JECTOR Filter. First find your supply steam pressure then maximum steam flow required and pick a unit in the operating range. For steam flow greater than listed below, contact the factory.



LIQUI/JECTOR steam filters should be placed close to your autoclave/sterilizer as shown below.



ORDERING INFORMATION

Housing Material

Inlet/Outlet Size
4S = 1 in 304SS

Element
TM20

Gaskets
E = Hi Temp EPDM

Drains
PD = Plug
ST = Steam Trap

Size
1 = (10 in)
2 = (20 in)

Example: **4S - TM20 - E - PD - 1**

IMPORTANT NOTICE TO USER: The following is made in lieu of all other warranties expressed or implied. Manufacturer's and Seller's only obligation shall be to issue credit against the purchase or replacement of the equipment proved to be defective in material or workmanship. Neither Manufacturer nor Seller shall be liable for any injury, loss or damage, direct or indirect, special or consequential, arising out of the use of, misuse, or the inability to use such product. The information contained herein is based on technical data and tests which we believe to be reliable and is intended for use by persons having technical skill at their discretion and risk. Since conditions of use are outside Osmonics control, we can assume no liability whatsoever for results obtained or damages incurred through the application of the data presented. This information is not intended as a license to operate under, or a recommendation to infringe upon, any patent of Osmonics or others covering any material or use. The foregoing may not be altered except by a written agreement signed by officers of the Manufacturer.

For More Information Call Toll Free in the USA: **800/848-1750**

Manufactured in the USA



5951 Clearwater Drive
Minnetonka, Minnesota 55343-8990 USA
Phone: 612/933-2277 • Fax: 612/933-0141 • Telex: 29-0847